

INTELLIGENT KEY TIPS

The Intelligent Keys used on late model Nissan and Infiniti vehicles may NOT be interchangeable between models and years.

Although the Intelligent Keys may look the same on the outside (physical appearance), they may have different manufacturers and/or different electronic architecture on the inside.



*Even though **Intelligent Keys** may look the same, there are important differences!*

*Here are two examples of Intelligent Keys that look the same but are **NOT** interchangeable.*



Although these keys look the same, they have different manufacturers and are **NOT** interchangeable.



Although these keys look the same, they have different manufacturers and are **NOT** interchangeable.



Late model NISSAN AND INFINITI vehicles utilize one of the following Intelligent Key manufacturers:

- Alps
- Continental

Intelligent Keys from these manufacturers may look the same but cannot be swapped. If the wrong type of Intelligent Key is used, registration will not complete.

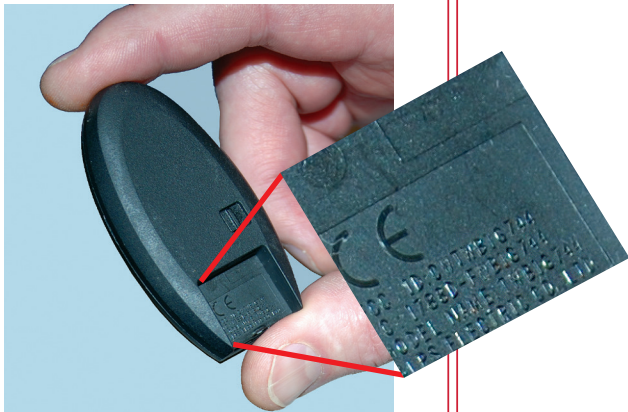
The best way to confirm that an Intelligent Key is the correct one for the vehicle on which you are working is to look up the Intelligent Key part number using FAST and the VIN.

There are some indicators that may help when trying to confirm if the correct Intelligent Key is being used. We will cover these helpful indicators on the following pages.

EXTERNAL DIFFERENCES

This area, on the back side of the Intelligent Key with the mechanical key removed, has very small printing. If you look closely, you will see and feel a difference between the Alps and Continental Intelligent Keys.

Alps has stamped information; you can see and feel the raised characters of the stamping.



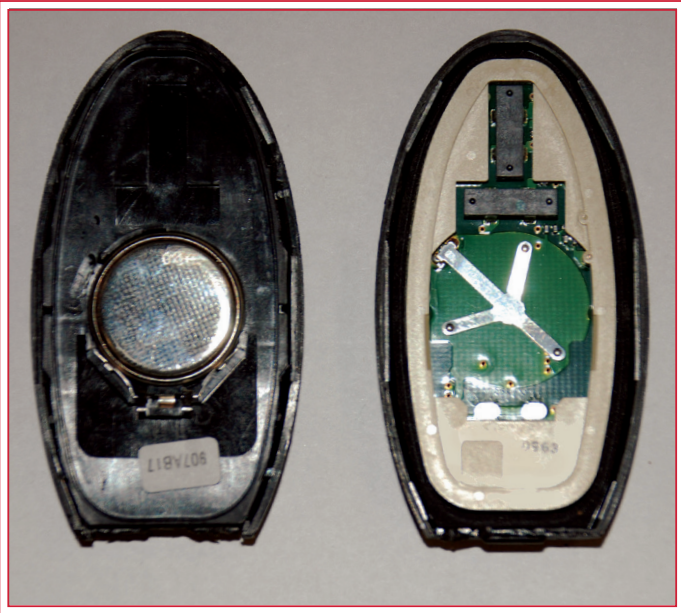
Continental has printed information; the area is smooth to the touch.



INTERNAL DIFFERENCES

Notice the differences in the visible circuitry, battery placement and battery retention.

Alps Intelligent Key with the back removed



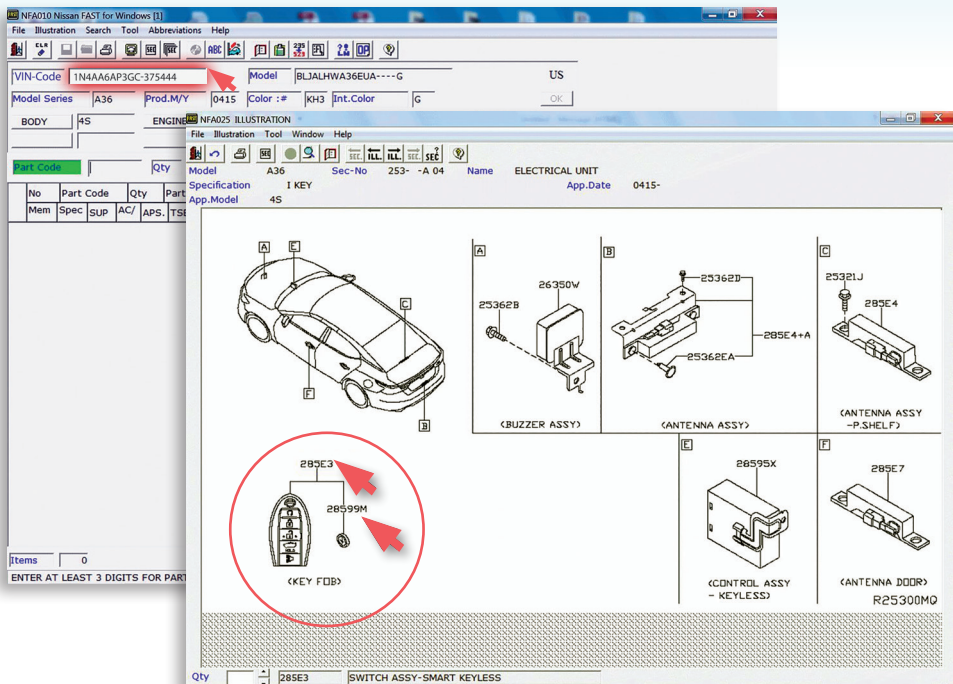
Continental Intelligent Key with the back removed



NOTE

- Although the Continental Intelligent Keys all look the same on the outside, there are five different types of electronic architecture for the Continental Intelligent Key.
- Even if you confirm an Intelligent Key looks the same on the inside and outside, it still may not be correct for the vehicle.
- Using FAST (or your equivalent system) and the VIN to look up the part number is the only way to confirm the correct Intelligent Key for a given vehicle.

The following shows an example of confirming the correct Intelligent Key and battery part numbers for a given vehicle using FAST and the vehicle's VIN.



Model	Code						
		2011	2012	2013	2014	2015	2016
GT-R	R35						
Rogue	T32						
Rogue Select	S35						
Murano	Z51						
Murano	Z52						
Frontier	D40						
Pathfinder	R51						
Pathfinder	R52						
Xterra	N50						
Titan	A60						
Titan	A61						
Armada	TA60						
Altima sdn & cpe	L32						
Altima Sedan	L33						
Maxima	A36						
Maxima	A35						
CUBE	Z12						
JUKE	F15						
LEAF	ZE0						
Sentra	B16						
Sentra	B17						
Versa sdn & HB	C11						
Versa Sedan	N17						
Versa Note	E12						
370Z	Z34						
Quest	V42/E52						
NV200	M20						
NV	F80						

INTELLIGENT KEY USAGE CHART

This chart provides a visual representation of the different types of Intelligent Keys used on late model **Nissan** vehicles.

Alps	Continental Type 2	Continental Type 3
No I Key / NA	Continental Type 5	Continental Type 6

THE USAGE CHART PROVIDED CAN BE USED AS REFERENCE, BUT USING FAST (OR YOUR EQUIVALENT SYSTEM) AND THE VIN TO LOOK UP THE PART NUMBER IS THE ONLY WAY TO CONFIRM THE CORRECT INTELLIGENT KEY FOR A GIVEN VEHICLE.

INTELLIGENT KEY USAGE CHART

This chart provides a visual representation of the different types of Intelligent Keys used on late model **Infiniti** vehicles.

Alps/CK	Continental Type 2	Continental Type 4
No I Key / NA	Continental Type 3	Continental Type 5

Model	Code						
		2011	2012	2013	2014	2015	2016
EX35 / QX50	J50						
FX / QX70	S51						
G25 / G37 / Q40 / Q60	V36						
Q50	V37						
M / Q70	Y51						
QX56 / QX80	Z62						
JX35 / QX60	L50						

THE USAGE CHART PROVIDED CAN BE USED AS REFERENCE, BUT USING FAST (OR YOUR EQUIVALENT SYSTEM) AND THE VIN TO LOOK UP THE PART NUMBER IS THE ONLY WAY TO CONFIRM THE CORRECT INTELLIGENT KEY FOR A GIVEN VEHICLE.

BATTERY TYPE

In addition to confirming that the correct Intelligent Key is being used, you should also check to make sure that the correct battery is installed.

Alps = CR-2025 Continental = CR-2032

Although these two batteries are very similar, they differ in dimensions and Amp-Hour rating.

The CR-2025 (for Alps) is thinner than the CR-2032 (for Continental).

- If CR-2025 is used in a Continental Intelligent Key, it could result in intermittent connection.
- If the CR-2032 is used in the Alps Intelligent Key, it may interfere with snapping the back cover into place – the battery may be too thick.

The CR-2025 (for Alps) has less Amp-Hour capacity than the CR-2032 (for Continental).

- If CR-2025 is used in a Continental Intelligent Key, battery performance is reduced.

Make sure the battery is installed with the negative (–) side facing up.



CR-2025 (for Alps)

Lithium, 3V, 150 mAh



CR-2032 (for Continental)

Lithium High Energy, 3V, 230 mAh



BATTERY TESTING

- The battery voltage should be checked under load.
- If a battery is taken out of the Intelligent Key and checked with a voltmeter, the reading will be higher and could result in incorrect judgment of the battery's condition.
- If you think the battery is OK, but it is too weak to perform correctly, an Intelligent Key may be needlessly replaced when only a replacement battery is needed.

NOTE: Refer to NTB15-077 or ITB15-026 for information on using Signal Tech-II for testing Intelligent Key battery voltage for many Nissan and Infiniti vehicles.

ENVIRONMENTAL CONDITIONS

When working with reported intermittent operation of an Intelligent Key, keep in mind that environmental conditions can interfere with the Intelligent Key signals.

Examples of devices/conditions that may result in frequencies that interfere with the Intelligent Key are:

- Mobile phones
- Garage door openers
- Home security systems
- Wireless chargers
- Accessories such as alarm systems that broadcast at the same frequency as the Intelligent Key
- Close proximity to radio stations or power stations that generate frequencies (or harmonics) that are close to the Intelligent Key operating frequency

